

# 1602 PARKING CONTROL



# BARRIER GATE OPERATOR



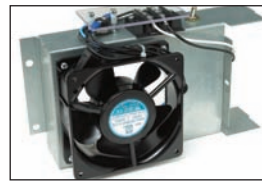
**automatic p.a.m.s.**  
sequencing with slide  
and swing gates



**wishbone**  
style arm kit for up to 20 foot  
length, includes counter weights



**barrier arms**  
available in wood only with  
optional foam padding



**fan/heater kits**  
options available for extreme  
weather conditions

- Designed to control wide traffic lanes (20 feet maximum) in limited use applications
- Suitable for low-cycle applications to restricted access areas such as prisons, airport security areas or industrial sites
- Electronic limit settings
- Rotates the arm 90° in approximately 5 seconds
- Three-piece wishbone style arm has a maximum length of 20 feet
- 360 degree gear box rotation provides for smooth operation and even wear, increasing the life span of the operator
- plug-in loop detectors simplify installation and wiring
- up input memory buffer
- down memory option

FEATURES

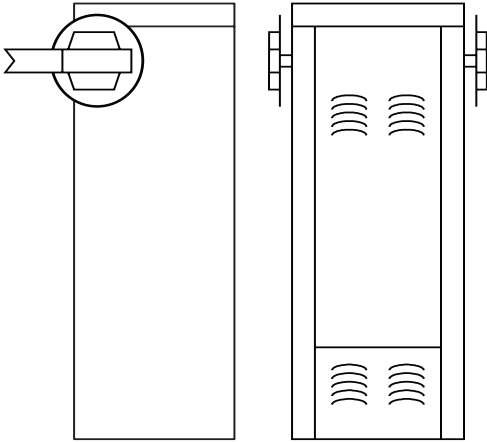
ACCESS CONTROL SOLUTIONS





# 1602 BARRIER GATE PARKING CONTROL

The model 1602 Barrier Gate Operators are designed for limited use applications such as industrial sites and loading dock areas. It is used to control wide traffic lanes (20 feet maximum) using a three-piece wishbone style arm. The heavy-duty harmonic arm linkage assures smooth and accurate arm travel of 90° in approximately 5 seconds.



**1602 1 HP**  
 15" W x 38" H x 15" D  
 38.1cm W x 96.5cm H x 38.1cm D

## 1602 Operator Specs

Class of operation	Max. arm length	Primary reduction	Speed	HP	Power	DC Convenience Open Package
III, IV	20' (6m) wood 3 piece wishbone style arm	60:1	90° approx 5 sec	1HP	115 VAC, 60 Hz, 7.0A 230 VAC, 60 Hz, 3.5A** 460 VAC, 60 Hz, 1.8A**	Optional

\*\* These operators use a step-down transformer to achieve 115 VAC operating voltage

## General Specs

### Mechanical

Primary Reduction: 60:1  
 worm gear running in a continuous oil bath  
 Speed: 90° rotation in approximately 5 sec  
 Housing: G90 galvanized steel painted white.

### Release Method

fail-secure mechanical

### Loop Detectors

Port for plug-in open (up) detector  
 Port for plug-in reverse (down) detector

### Standard Features

Electronic limits  
 Auto-close timer 1-23 seconds  
 P.A.M.S. (Perimeter Access Management System) sequence with a slide or swing gate operator  
 Left / right mount  
 360° gear box rotation before the motor changes direction. This provides for smooth operation, evens wear across the entire gear-box, and increases the life span of the operator

3-piece 1x4 kiln dried wood arm up to 20-feet in length, includes counter-balance weights

### Advanced Features

Up input memory buffer  
 Down memory option  
 Multiple up commands

### Options Available

Gate Tracker™ reporting output provides operator data to access control system (DKS 1833, 1835, 1837 or 1838 only)  
 Heater kit and/or fan kit

### Safety Standards

Complies with the UL 325 and UL 991 safety standards  
 ETL listed

### Operating Temp

10°F to 140°F  
 -12°C to 62°C  
 Optional heater and fan kits available

### Shipping Weight

Approximately 160-180 lbs (72-81 kg)  
 Arm kit: 45 lbs (20kg)

### Warranty

5-year factory warranty

Distributed by:

### DOORKING®, INC.

120 Glasgow Avenue, Inglewood, California 90301 U.S.A. Tel: 310-645-0023 FAX: 310-641-1586 www.doorking.com

© 2006 All Rights Reserved. Product specifications may change without notice. Rev. 6/06

### MEMBER:

